

4" SHIELDED WASTE BOX ASSEMBLY (ISOMETRIC)
SCALE: NONE

PARTS LIST / MATERIAL LIST						
QTY	REQD	PART/DASH NUMBER	NOMENCLATURE/DESCRIPTION	MATERIAL/REFERENCE	SHT	ITEM NO
	X	-010	4" SHIELDED WASTE BOX ASSEMBLY		2	1
X	1	-020	LID WELDMENT		2	2
						3
						4
						5
1		NUCFIL-16SS HP	HIGH VENTING FILTER, 2" NPSC	NUCLEAR FILTER TECHNOLOGY	2	6
4		1016975	HR-125 UNC SWIVEL HOIST RING, 1-1/4-7 X 4.5, 15,000 LB WORKING LOAD	CROSBY	2	7
4		1016942	HR-125 UNC SWIVEL HOIST RING, 3/4-10 X 2.75, 7,000 LB WORKING LOAD	CROSBY	2	8
						9
						10
						11
	AR		PLATE, 4" THK	ASTM A36	2	12
1			PLATE, 3" THK	ASTM A36	2	13
1			PLATE, 1" THK	ASTM A36	2	14
3			I BEAM, S6" X 17.25 LB	ASTM A572 GR 50	2	15

GENERAL NOTES (UNLESS OTHERWISE SPECIFIED)

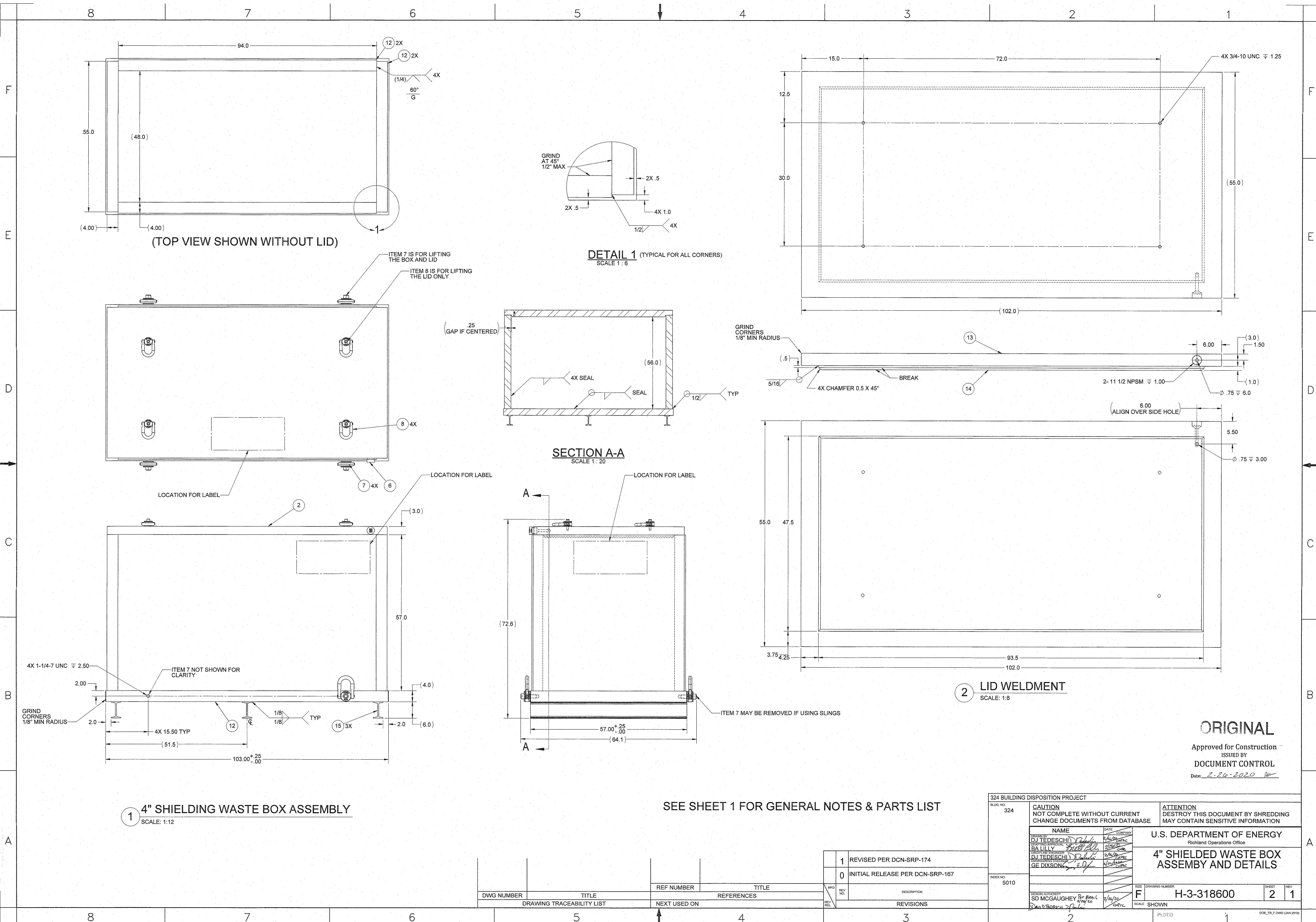
- BREAK ALL SHARP EDGES AND REMOVE ALL BURRS.
- DIMENSION AND TOLERANCE SHALL BE PER ASME Y14.5. ALL DIMENSIONS ARE IN INCHES.
- TOLERANCES ARE AS FOLLOWS: (UNLESS OTHERWISE NOTED), FRACTIONS: ±1/16" DECIMAL: .X ± 0.12, .XX ± 0.05, .XXX ± 0.005, ANGULAR: ± 5°
- APPROXIMATED OVERALL WEIGHT IS 33K LBS AND THE LID IS 6K LBS. SEE BOX LABEL FOR ACTUAL WEIGHT. OVERALL WEIGHT (WHEN FILLED) NOT TO EXCEED 50K LBS.
- ALL WELDING AND WELDING INSPECTIONS SHALL BE DONE IN ACCORDANCE WITH AWS D1.1 AND SHALL BE VISUALLY INSPECTED EXCEPT FOR WELDS INDICATED AS SEAL WELDS.
- ABBREVIATIONS AND ACRONYMS SHALL BE PER H-9-008015 AND ASME Y14.38
- THIS BOX IS NOT DESIGNED FOR TRANSPORTATION DIRECTLY BUT SHALL BE USED IN CONJUNCTION WITH A SUPER SACK® TYPE CONTAINMENT FOR TRANSPORTATION.
- BOX IS DESIGNED TO HOLD TWO GROUT CONTAINERS (H-3-49415) OR TWO 44" WASTE BINS (H-3-318573).
- BOX IS DESIGNED FOR A 140 PSI MINIMUM LOADING, REQUIRED FOR THE DISPOSAL IN THE ENVIRONMENTAL RESTORATION DISPOSAL FACILITY (ERDF).
- ALL BOXES SHALL BE SEQUENTIALLY NUMBERED WITH WHITE OR BLACK PAINT STARTING AT SBX-001, (WHERE X IS THE THICKNESS OF THE STEEL LINER), DRAWING NUMBER AND BOX WEIGHT. LETTERS SHALL BE AT LEAST 1/2" HIGH AND WITH A CONTRASTING BACKGROUND AS REQUIRED. APPLY LABELS TO THE APPROXIMATE LOCATIONS SHOWN IN SHEET 2. LIST WEIGHT OF LID ON ON LID LABEL. ACTUAL WEIGHTS SHALL BE PUT IN THE LABEL AND NOT THE CALCULATED WEIGHT. ADD TO LID "DO NOT LIFT BOX USING LID HOIST RINGS".
- COAT ALL EXTERIOR SURFACES WITH EITHER POLYUREA OR EPOXY EXCEPT FOR THE SWIVEL HOISTS AND THE FILTER. COAT AND PREPARE SURFACE IN ACCORDANCE WITH THE MANUFACTURE'S INSTRUCTIONS. USE NFCI 50-022 AROMATIC POLYUREA OR APPROVED EQUAL FOR THE POLYUREA AND SHERWIN WILLIAMS PRO INDUSTRIAL WATER BASED CATALYZED EPOXY (PART A B73-300, B73-360 AND PART B B73V300) WITH SHERWIN WILLIAMS PRO INDUSTRIAL PRO-CRYL UNIVERSAL PRIMER (B66-310 SERIES) OR APPROVED EQUAL FOR THE EPOXY.

ORIGINAL
Approved for Construction
ISSUED BY
DOCUMENT CONTROL
Date: 7-26-2020 *[Signature]*

DWG NUMBER	TITLE	REF NUMBER	TITLE
	DRAWING TRACEABILITY LIST		REFERENCES
			NEXT USED ON

REV NO.	DESCRIPTION
1	REVISED PER DCN-SRP-174
0	INITIAL RELEASE PER DCN-SRP-167

324 BUILDING DISPOSITION PROJECT		CAUTION NOT COMPLETE WITHOUT CURRENT CHANGEDOCUMENTS FROM DATABASE	ATTENTION DESTROY THIS DOCUMENT BY SHREDDING MAY CONTAIN SENSITIVE INFORMATION															
PLT NO. 324	INDEX NO. 5010	U.S. DEPARTMENT OF ENERGY Richland Operations Office																
<table border="1"> <tr> <th>NAME</th> <th>DATE</th> <th>COMPANY</th> </tr> <tr> <td>DJ TEDESCHI</td> <td>11/20/18</td> <td>SAIC</td> </tr> <tr> <td>BA LILLY</td> <td>2/20/19</td> <td>SAIC</td> </tr> <tr> <td>DJ TEDESCHI</td> <td>7/26/20</td> <td>SAIC</td> </tr> <tr> <td>GE DIXSON</td> <td>7/26/20</td> <td>SAIC</td> </tr> </table>		NAME	DATE	COMPANY	DJ TEDESCHI	11/20/18	SAIC	BA LILLY	2/20/19	SAIC	DJ TEDESCHI	7/26/20	SAIC	GE DIXSON	7/26/20	SAIC	4" SHIELDED WASTE BOX ASSEMBLY	
NAME	DATE	COMPANY																
DJ TEDESCHI	11/20/18	SAIC																
BA LILLY	2/20/19	SAIC																
DJ TEDESCHI	7/26/20	SAIC																
GE DIXSON	7/26/20	SAIC																
ISSUANCE AUTHORITY SD MCGAUGHEY	DATE 7/26/20	SCALE AS SHOWN	DRAWING NUMBER H-3-318600															
			SHEET 1 OF 1															



1 4" SHIELDING WASTE BOX ASSEMBLY
SCALE: 1:12

2 LID WELDMENT
SCALE: 1:8

DETAIL 1 (TYPICAL FOR ALL CORNERS)
SCALE 1:6

SECTION A-A
SCALE 1:20

SEE SHEET 1 FOR GENERAL NOTES & PARTS LIST

ORIGINAL
Approved for Construction
ISSUED BY
DOCUMENT CONTROL
Date: 2-26-2020

324 BUILDING DISPOSITION PROJECT		CAUTION NOT COMPLETE WITHOUT CURRENT CHANGE DOCUMENTS FROM DATABASE		ATTENTION DESTROY THIS DOCUMENT BY SHREDDING MAY CONTAIN SENSITIVE INFORMATION	
BLDG. NO. 324	INDEX NO. 5010	NAME DJ TEDESCHI BA LILLY DJ TEDESCHI GE DIXSON	DATE 2/26/20 2/26/20 2/26/20 2/26/20	U.S. DEPARTMENT OF ENERGY Richland Operations Office	
DESIGN AUTHORITY SD MCGAUGHEY				SIZE F	DRAWING NUMBER H-3-318600
DRAWING NUMBER H-3-318600				SHEET 2	REV 1

DWG NUMBER	TITLE	REF NUMBER	TITLE

REV	DESCRIPTION
1	REVISED PER DCN-SRP-174
0	INITIAL RELEASE PER DCN-SRP-167