

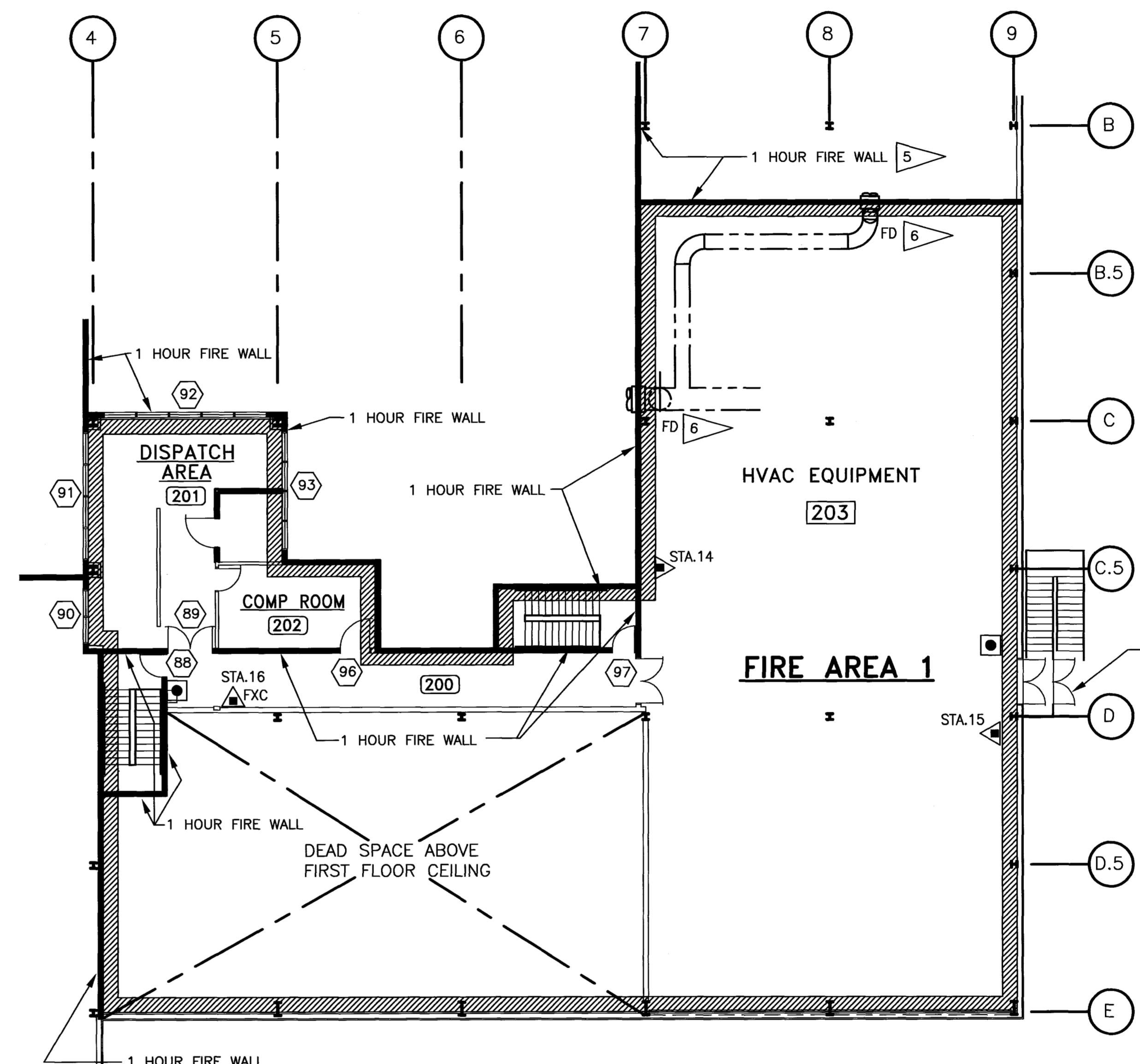
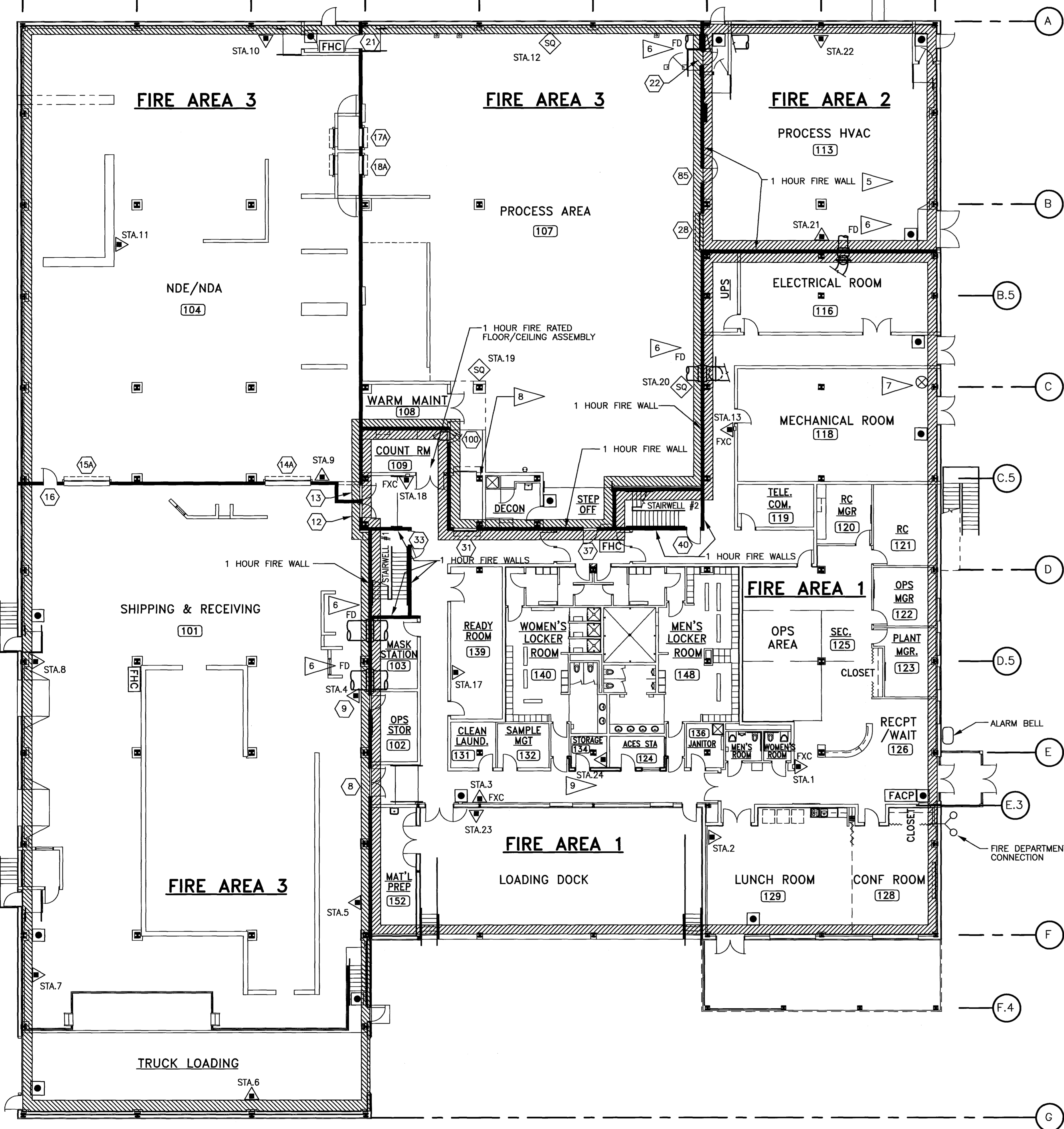
8 7 6 5 4 3 2 1



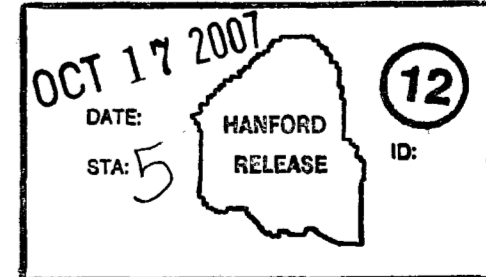
LEGEND

- 1 HOUR FIRE WALL
- FIRE AREA BOUNDARY
- SPRINKLER RISER
- FIRE DEPT. CONNECTION (FDC)
- DRY CHEMICAL EXTINGUISHER EQUIPPED WITH A SWAGelok QUICK DISCONNECT. CUT EXISTING NOZZLE OFF AND INSTALL A 5/8" TO 1/2" ADAPTER AND A SWAGelok QTB FITTING.
- FIRE DOOR
- FACP FIRE ALARM CONTROL PANEL
- FHC FIRE HOSE CONNECTION
- MANUAL PULL STATION
- DRY CHEMICAL EXTINGUISHER
- FXC FIRE EXTINGUISHER CABINET
- AS AUTOMATIC SPRINKLER SYSTEM (WET PIPE UNLESS NOTED)
- TD THERMAL DETECTION
- MPS MANUAL PULL STATION
- EXT HAND HELD EXTINGUISHER (DRY CHEMICAL UNLESS NOTED)
- ISD IONIZATION SMOKE DETECTOR
- FD FIRE DAMPER

FIRE AREA	AREA DESCRIPTION	ROOM DESCRIPTION	PROTECTION & DETECTION
1	ADMINISTRATION	ELECT/UPS ROOM	AS, TD, EXT
		MECHANICAL ROOM	AS, TD, EXT, MPS
		OFFICES	AS, TD, EXT, MPS
		CONF./LUNCH ROOM	AS, TD, EXT, MPS
		CHANGE ROOMS	AS, TD, EXT
		CONTROL AND COMPUTER ROOMS	AS, ISD
		HVAC ROOM	AS, TD, EXT, MPS
		1 HOUR CORRIDOR AND STAIRS	AS, TD, EXT, MPS
		MAT'L PREP ROOM	AS, TD, EXT, MPS
		LOADING DOCK	AUTOMATIC DRY PIPE, TD
2	PROCESS HVAC ROOM	PROCESS HVAC	AS, TD, EXT, MPS
		SHIPPING AND RECEIVING	AS, TD, FHC, EXT, MPS
3	NDE/NDA PROCESS AREA	NDE/NDA	AS, TD, FHC, EXT, MPS
		PROCESS ROOM	AS, TD, FHC, EXT, MPS
		GLOVE BOXES	MANUAL AND AUTOMATIC DRY CHEMICAL SYSTEM, TD



- GENERAL NOTES:**
- ALL OPENINGS IN 2 HOUR RATED WALLS TO BE PROTECTED WITH 1 1/2 HOUR RATED PROTECTION.
 - ALL OPENINGS IN 1 HOUR RATED WALLS TO BE PROTECTED WITH 1 HOUR RATED PROTECTION AS REQUIRED.
 - THE 2 HOUR OCCUPANCY SEPARATION WALLS ARE INDICATED FOR LOSS LIMITATION PURPOSES AND ARE NOT A REQUIREMENT OF THE UFC, USC, OR NFPA WHICH REQUIRE ONLY ONE HOUR OCCUPANCY SEPARATION WALLS.
 - FIRE AREAS SHOWN WERE ESTABLISHED FOR LOSS LIMITATION PURPOSES AND FOR SUPPRESSION SYSTEM ZONING.
 - FIRE WALLS ARE RATED 1 HOUR UNLESS OTHERWISE NOTED. FIRE WALLS IN PROCESS HVAC AREA (ROOM 113) ARE MAINTAINED AS 2 HOUR FIRE WALLS.
 - FIRE DAMPERS ARE NO LONGER MAINTAINED EXCEPT FOR THE TWO DAMPERS LOCATED IN THE PROCESS HVAC AREA (ROOM 113). THESE TWO DAMPERS ARE IN SERVICE AND MAINTAINED. FOR FIRE DAMPERS, SEE DRAWINGS H-2-131905, H-2-131907 AND H-2-131909.
 - FOR RISER OF AUTOMATIC SPRINKLER SYSTEM, SEE DRAWINGS H-2-131874, H-2-131879 AND H-2-828112, SHT.3.
 - FOR FIRE PROTECTION OF COLUMNS BELOW THE CONTROL ROOM, SEE DETAIL NO. 27 ON H-2-131770, SHEET 3.
 - FIRE WATCH EXTINGUISHER LOCATED INSIDE STORAGE ROOM.



GROUND LEVEL

UPPER LEVEL

DWG NO	TITLE	REV	DATE	DESCRIPTION	ENR	COMP
H-2-828112	FIRE SUPPRESSION SPRINKLER SYS PIPING	10	10/07	E.V. TO CONFIDENCE LEVEL "C" HNF-FMP-07-35350-RO	WOLTERS	UAC
H-2-828088	FIRE ALARM LAYOUT	9	10/07	E.V. TO CONFIDENCE LEVEL "C" HNF-FMP-07-35140-RO	WILSON	UAC
H-2-131886	FIRE PROTECTION UTILITY FLOW DIAGRAM	8	10/07	E.V. TO CONFIDENCE LEVEL "C" HNF-FMP-06-30558-RO	LARGE	UAC
H-2-131774	DOOR SCHEDULE	8	7/06	E.V. TO CONFIDENCE LEVEL "C" HNF-FMP-06-30558-RO	WOLTERS	UAC
H-2-818276	WRAP GENERAL ARRANGEMENT	7	6/05	E.V. TO CONFIDENCE LEVEL "C" INCORP HNF-FMP-05-1145-RO AND DIRECT REV PER HNF-FMP-05-26286-RO.	WOLTERS	UAC
H-2-131738	WRAP FACILITY DRAWING INDEX	7	6/05	E.V. TO CONFIDENCE LEVEL "C" INCORP HNF-FMP-05-1145-RO AND DIRECT REV PER HNF-FMP-05-26286-RO.	SPOONER	UAC

U.S. DEPARTMENT OF ENERGY		Richland Operations Office	
FIRE PROTECTION ZONE PLAN			
SIZE	BLDG NO	INDEX NO	DWG NO
F	2336W	8004	H-2-131887/10
SCALE	3/32"=1'-0"	EDT	702893
SHEET 1 OF 1		DOE_TB_FDWG (01-01)	

DWG NO	TITLE	REV	DATE	DESCRIPTION	ENR	COMP
	DRAWING TRACEABILITY LIST					
	REFERENCES					
	NEXT USED ON					
	END ITEM					

8 7 6 5 4 3 2 1